

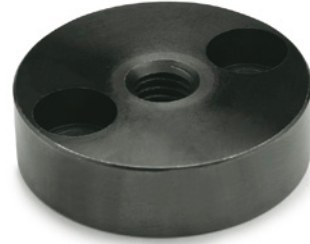
Mounts for levelling feet

SPECIFICATION

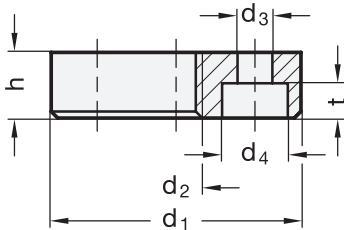
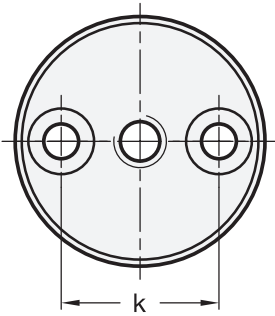
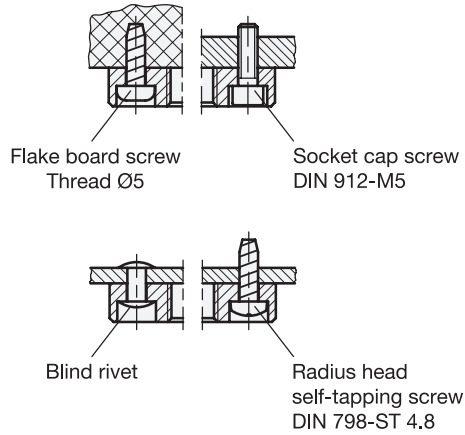
Steel
 - weldable
 - blackened

INFORMATION

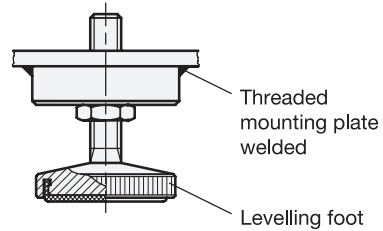
GN 349 mounts are used on levelling feet particularly in such cases where a machine shrouding is made of very thin sheet metal.



Mounting possibilities



Application example



GN 349

Description	d1	d2	d3	d4	h	k	t	△
GN 349-36-M8	36	M 8	5.3	10	10	24	5.3	67
GN 349-36-M10	36	M 10	5.3	10	10	24	5.3	65
GN 349-36-M12	36	M 12	5.3	10	10	24	5.3	63